

**L2+ 16/24-Port Gigabit Ultra PoE  
+ 2/4-Port 10G SFP+ Managed Switch**

**GS-5220 Ultra PoE Series**

Quick Installation Guide

# Table of Contents

1. Package Contents .....	3
2. Requirements .....	5
3. Terminal Setup .....	6
4. Logon to Console.....	7
5. Configuring IP Address.....	8
6. Starting Web Management .....	10
7. Saving Configuration .....	13
8. Recovering Back to Default Configuration.....	14
9. Customer Support .....	15

## 1. Package Contents

Thank you for purchasing PLANET L2+ 16/24-Port Gigabit Ultra PoE + 2/4-Port 10G SFP+ Managed Switch. The description of this model is shown below:

Model Name	Gigabit RJ45 Ports	Gigabit SFP Slots	10G SFP+ Slots	PoE Budget	System Redundant Power
GS-5220-16UP4S2X	16	4	2	400W	-
GS-5220-16UP4S2XR	16	4	2	400W	Yes
GS-5220-24UP4X	24	4 combo	4	400W	
GS-5220-24UP4XR	24	4 combo	4	400W	Yes
GS-5220-24UPL4X	24	4 combo	4	600W	
GS-5220-24UPL4XR	24	4 combo	4	600W	Yes

“**Managed PoE Switch**” is used as an alternative name in this Quick Installation Guide.

Open the box of the Managed PoE Switch and carefully unpack it. The box should contain the following items:

- The Managed PoE Switch
- Quick Installation Guide
- RJ45 to RS232 Cable
- Rubber Feet
- Two Rack-mounting Brackets with Attachment Screws
- Power Cord
- SFP Dust-proof Caps

Model	SFP Dust-proof Caps
GS-5220-16UP4S2X	6
GS-5220-16UP4S2XR	6
GS-5220-24UP4X	8
GS-5220-24UP4XR	8
GS-5220-24UPL4X	8
GS-5220-24UPL4XR	8

If any item is found missing or damaged, please contact your local reseller for replacement.

---

## 2. Requirements

- Workstations running Windows 10/XP/2003/Vista/7/8/2008, MAC OS X or later, Linux, UNIX, or other platforms are compatible with TCP/IP protocols.
- Workstations are installed with Ethernet NIC (Network Interface Card)
- **Serial Port Connection** (Terminal)
  - The above Workstations come with COM Port (DB9) or USB-to-RS232 converter.
  - The above Workstations have been installed with **terminal emulator**, such as Hyper Terminal included in Windows XP/2003.
  - Serial cable -- one end is attached to the RS232 serial port, while the other end to the console port of the Managed PoE Switch.
- **Ethernet Port Connection**
  - Network cables -- Use standard network (UTP) cables with RJ45 connectors.
  - The above PC is installed with Web browser and JAVA runtime environment plug-in.

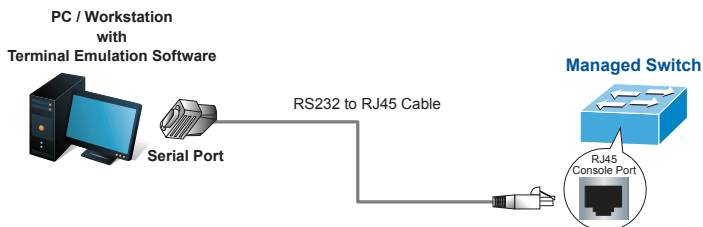


### Note

It is recommended to use Internet Explore 8.0 or above to access the Managed PoE Switch. If the Web interface of the Managed PoE Switch is not accessible, please turn off the anti-virus software or firewall and then try it again.

### 3. Terminal Setup

To configure the system, connect a serial cable to a **COM port** on a PC or notebook computer and to RJ45 type of serial port of the Managed PoE Switch.

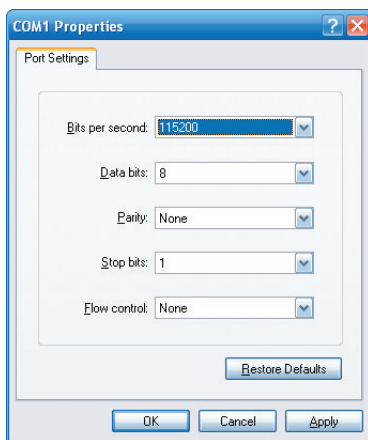


**Figure 3-1** Managed PoE Switch Console Connectivity

A terminal program is required to make the software connection to the Managed PoE Switch.

1. Run terminal program on the OS.
2. When the following screen appears, make sure that the COM port should be configured as:

- ◆ Baud: 115200
- ◆ Data bits: 8
- ◆ Parity: None
- ◆ Stop bits: 1
- ◆ Flow control: None



**Figure 3-2** COM Port Configuration

## 4. Logon to Console

Once the terminal is connected to the device, power on the Managed PoE Switch, and the terminal will display “running testing procedures”. Then, the following message asks to log-in user name and password. The factory default user name and password are shown as follows and the login screen in Figure 4-1 appears.

```
Username: admin  
Password: admin
```

```
Press ENTER to get started  
Username: admin  
Password:  
GS-5220-16UP4S2X# ■
```

Figure 4-1: Managed PoE Switch Console Login Screen

The user can now enter commands to manage the Managed PoE Switch. For a detailed description of the commands, please refer to the following chapters.



### Note

1. For security reason, please change and memorize the new password after this first setup.
2. Only accept command in lowercase letter under console interface.

## 5. Configuring IP Address

The Managed PoE Switch is shipped with default IP address shown below.

```
IP Address: 192.168.0.100  
Subnet Mask: 255.255.255.0
```

To check the current IP address or modify a new IP address for the Switch, please use the procedures as follows:

### ■ Show the current IP Address

1. At the “#” prompt, enter “**show ip interface brief**”.
2. The screen displays the current IP address as shown in Figure 5-1.

```
GS-5220-16UP4S2X# show ip interface brief  
Interface          Address                Method   Status  
-----  
VLAN 1             192.168.0.100/24      Manual   DOWN  
GS-5220-16UP4S2X#
```

Figure 5-1: IP Information Screen

### ■ Configuring IP Address

3. At the “#” prompt, enter the following command and press **<Enter>** as shown in Figure 5-2.

```
GS-5220 Ultra PoE Series# configure terminal  
GS-5220 Ultra PoE Series(config)# interface vlan 1  
GS-5220 Ultra PoE Series(config-if-vlan)# ip address 192.168.1.100  
255.255.255.0
```



The previous command would apply the following settings for the Managed PoE Switch.

IP Address: **192.168.1.100**  
Subnet Mask: **255.255.255.0**

```
GS-5220-16UP4S2X# configure terminal
GS-5220-16UP4S2X(config)# interface vlan 1
GS-5220-16UP4S2X(config-if-vlan)# ip address 192.168.1.100 255.255.255.0
GS-5220-16UP4S2X(config-if-vlan)# █
```

**Figure 5-2:** Configuring IP Address Screen

4. Repeat step 1 to check if the IP address has changed.

### ■ Store current switch configuration

5. At the “#” prompt, enter the following command and press <Enter>.

**# copy running-config startup-config**

```
GS-5220-16UP4S2X# copy running-config startup-config
Building configuration...
% Saving 3165 bytes to flash:startup-config
```

**Figure 5-3:** Saving Current Configuration Command Screen

If the IP is successfully configured, the Managed PoE Switch will apply the new IP address setting immediately. You can access the Web interface of the Managed PoE Switch through the new IP address.



**Note**

If you are not familiar with the console command or the related parameter, enter “**help**” anytime in console to get the help description.

## 6. Starting Web Management

The following shows how to start up the **Web Management** of the Managed PoE Switch. Note the Managed PoE Switch is configured through an Ethernet connection. Please make sure the manager PC must be set to the same **IP subnet address**.

For example, the default IP address of the Managed PoE Switch is **192.168.0.100**, then the manager PC should be set to **192.168.0.x** (where x is a number between 1 and 254, except 100), and the default subnet mask is 255.255.255.0.

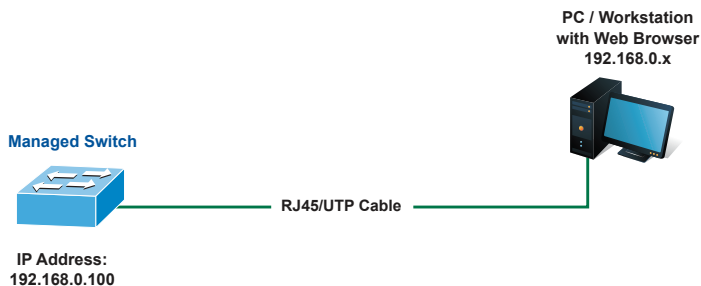


Figure 6-1: IP Management Diagram

### Logging in to the Managed PoE Switch

1. Use Internet Explorer 8.0 or above Web browser and enter IP address **http://192.168.0.100** (the factory default IP address or the one that you have just changed in console) to access the Web interface.
2. When the following dialog box appears, please enter the default user name and password "**admin**" (or the password you have changed via console). The login screen in Figure 6-2 appears.

Default IP Address: **192.168.0.100**  
Default Username: **admin**  
Default Password: **admin**

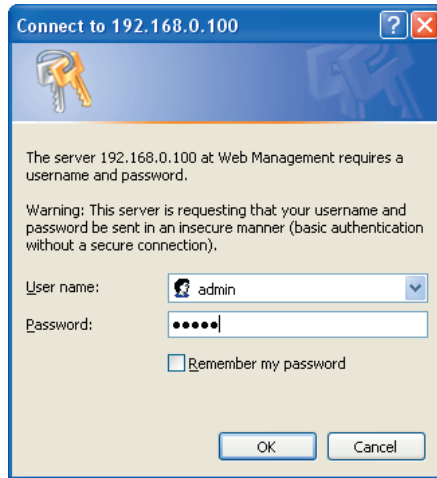


Figure 6-2: Login Screen

3. After entering the password, the main screen appears as Figure 6-3 shows.



Figure 6-3: Web Main Screen of Managed PoE Switch

The Switch Menu on the left of the Web page lets you access all the commands and statistics the Managed PoE Switch provides.

- ▶ System
- ▶ SNMP
- ▶ Port Management
- ▶ Link Aggregation
- ▶ VLANs
- ▶ Spanning Tree
- ▶ Multicast
- ▶ QoS
- ▶ Access Control List
- ▶ Authentication
- ▶ Security
- ▶ MAC Address Table
- ▶ LLDP
- ▶ Diagnostics
- ▶ PoE
- ▶ Loop Protection
- ▶ RMON
- ▶ ONVIF

**Figure 6-4:** Switch Menu



**Note**

If you are not familiar with Switch functions or the related parameter, press “**Help icon**” anytime on the Web page to get the help description.

Now, you can use the Web management interface to continue the Switch management or manage the Switch by console interface.

Please refer to the user’s manual for more.

## 7. Saving Configuration

In the Managed PoE Switch, the running configuration file stores in the RAM. In the current version, the running configuration sequence of running-config can be saved from the RAM to FLASH by executing save startup config command, so that the running configuration sequence becomes the startup configuration file, which is called configuration save.

To save all applied changes and set the current configuration as a startup configuration, the startup-configuration file will be loaded automatically across a system reboot.

1. Click System, Save Startup Config.



2. Press the **"Save Configuration"** button.

**Save Running Configuration to startup-config**

Please note: The generation of the configuration file may be time consuming, depending on the amount of non-default configuration.

## 8. Recovering Back to Default Configuration

IP address has been changed or admin password has been forgotten –

To reset the IP address to the default IP address “**192.168.0.100**” or reset the login password to default value, press the hardware **reset button** on the rear panel for about **10 seconds**. After the device is rebooted, you can login the management Web interface within the same subnet of 192.168.0.xx.

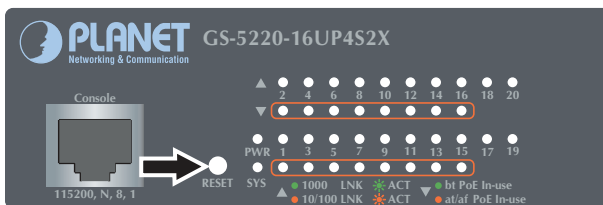


Figure 8-1: GS-5220-16UP4S2X(R) Reset Button

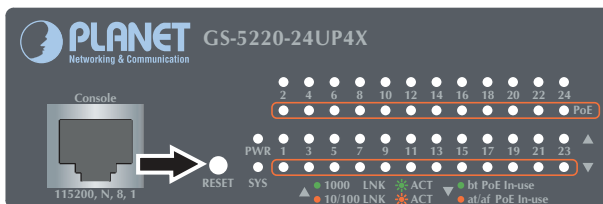


Figure 8-2: GS-5220-24UP4X(R) Reset Button

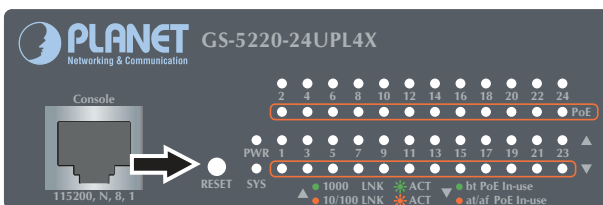


Figure 8-3: GS-5220-24UPL4X(R) Reset Button

---

## 9. Customer Support

Thank you for purchasing PLANET products. You can browse our online FAQ resource and User's Manual on PLANET Web site first to check if it could solve your issue. If you need more support information, please contact PLANET switch support team.

PLANET online FAQ:

<http://www.planet.com.tw/en/support/faq.php?type=1>

Switch support team mail address:

[support\\_switch@planet.com.tw](mailto:support_switch@planet.com.tw)

GS-5220 Ultra PoE Series User's Manual:

<http://www.planet.com.tw/en/support/download.php?type1=1&model=&type=3>



(Please select your switch model name from the drop-down menu of Product Model.)

Copyright © PLANET Technology Corp. 2017.

Contents are subject to revision without prior notice.

PLANET is a registered trademark of PLANET Technology Corp. All other trademarks belong to their respective owners.

